

# CERTIFICATE OF LOCATION OF GOVERNMENT CORNER

County of Anoka

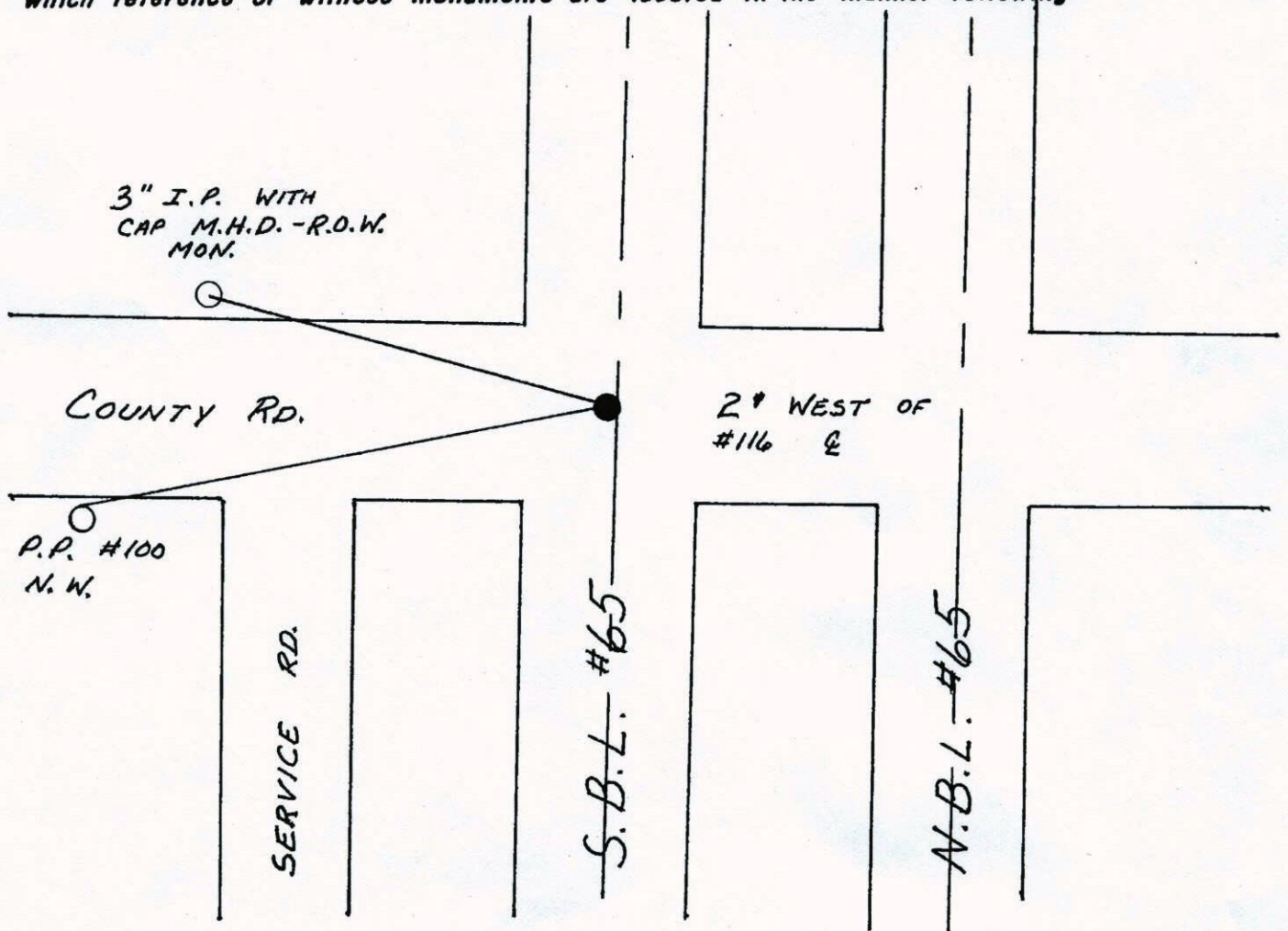
State of Minnesota

CENTER Corner of Sec. 32 Township 32 Range 23

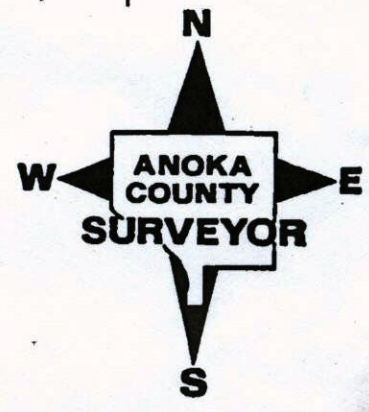
I hereby certify that on the 17 day of APRIL, 1963, I found the described corner which was evidenced by BOLT IN CENTERLINE HIGHWAY #65

and I further certify that to perpetuate the location of said corner, I did, at the exact location thereof, place a permanent marker consisting of SAME UNDER BLK.T.P.

which reference or witness monuments are located in the manner following:



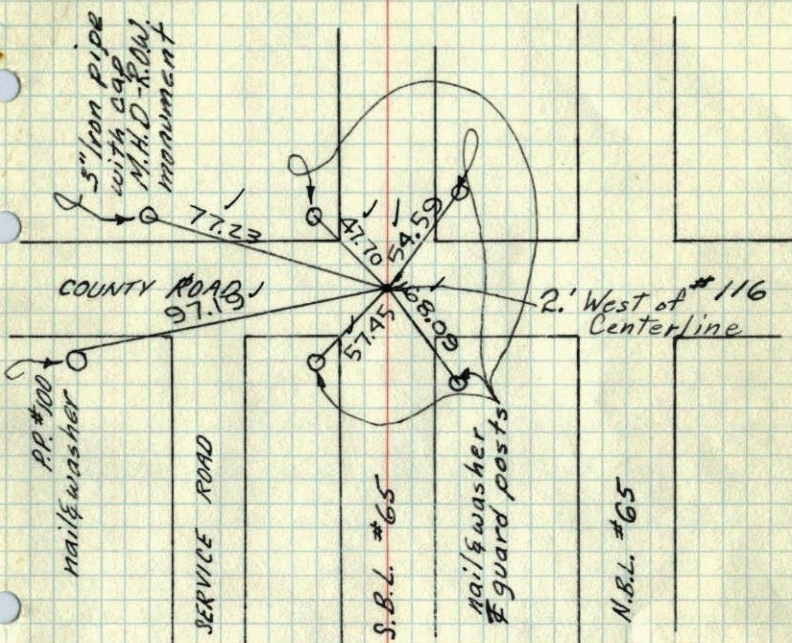
Revised date	Revised date	Revised date
10-24-90		
10-20-91		





## Center Sec. 32-32-23

Bolt in E of South bound lane Hwy #65

Bolt on line between E & W 1/4 cor. of  
sec 32-32-23Undisturbed  
9 June 64  
J.D.

April 17, 1963

J. Oliver  
M. D. AndersonTEMPERATURE CORRECTED  
AND HORIZONTALLY  
TAPED MEASUREMENTS

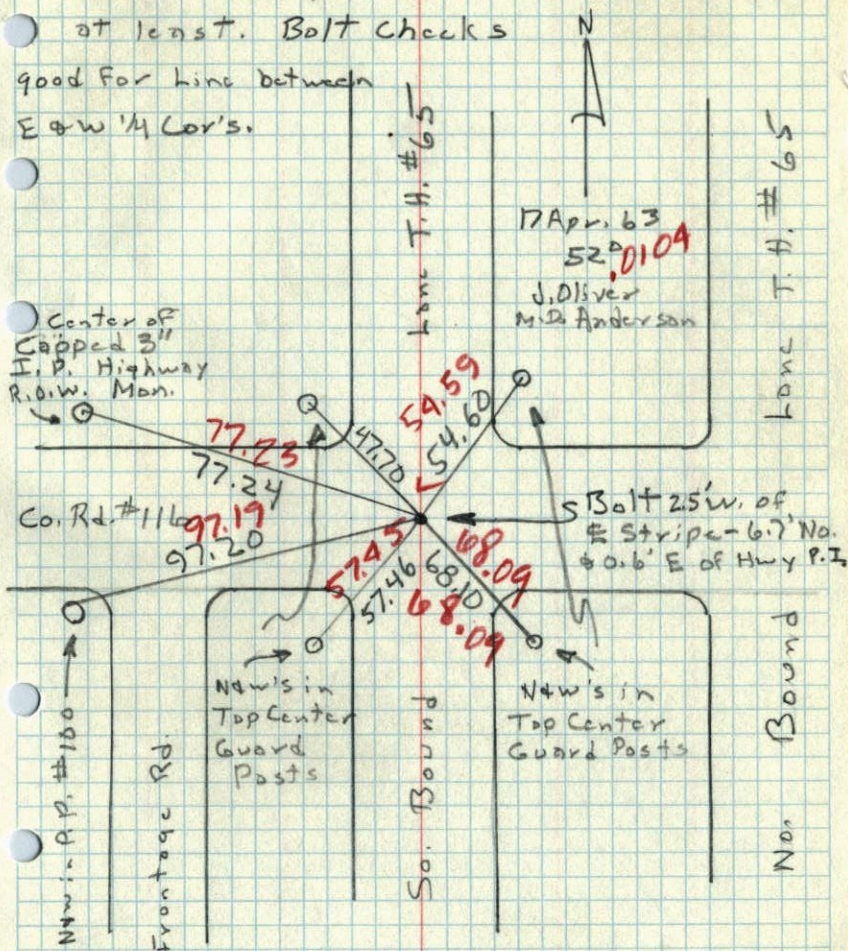
Retie 7/9/64

M. D. Anderson  
R. CarlsonTie Check  
Aug. 5, 1966  
H. Larson  
D. Potter  
G. ReimerROLAND W. ANDERSON  
COUNTY SURVEYOR  
ANOKA COUNTY, MINNESOTA

## Center of Sec. 32, T32, R23

Bolt in Blk Top used by Knutson and Hoium

at least. Bolt Checks

good for line between  
E & W 1/4 Cor.'s.Center of  
Capped 3"  
I.P. Highway  
R.O.W. Mon.17 Apr. 63  
52.0109  
J. Oliver  
M. D. AndersonCo. Rd. #116  
97.19  
97.20Nails in  
Top Center  
Guard  
PostsNails in  
Top Center  
Guard  
Posts